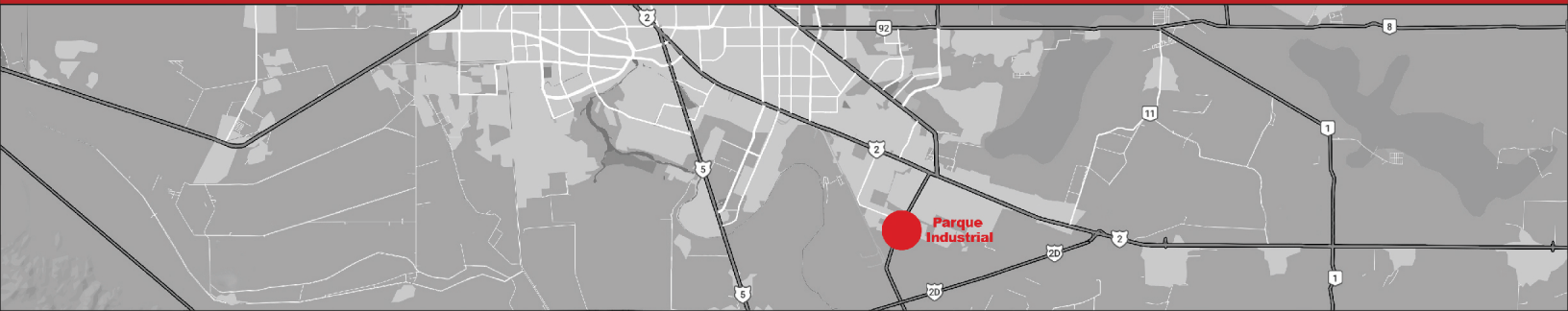




DLH | HAUS VII INDUSTRIAL PARK



GENERAL INFORMATION

- Private Industrial Park
- Multiple Uses: Logistic, Manufacturing and Assembly
- 4 Multi Tenant Buildings / +200K to 300K SqFt modules
- 4 Modules per Building / + 50,000 SqFt per Module
- Designated Landscaping Areas
- Wired & Digital Telecommunications Available
- Reusable Water for Landscaping Areas
- Centralized Fire Protection System
- CCTV perimeter & Public Areas
- LED Public Lighting
- Perimeter Fence & Restricted Access
- Two Secured Entrances
- Equipped Guard Houses 24/7
- Exterior Bus Parking
- Exterior Commercial Area

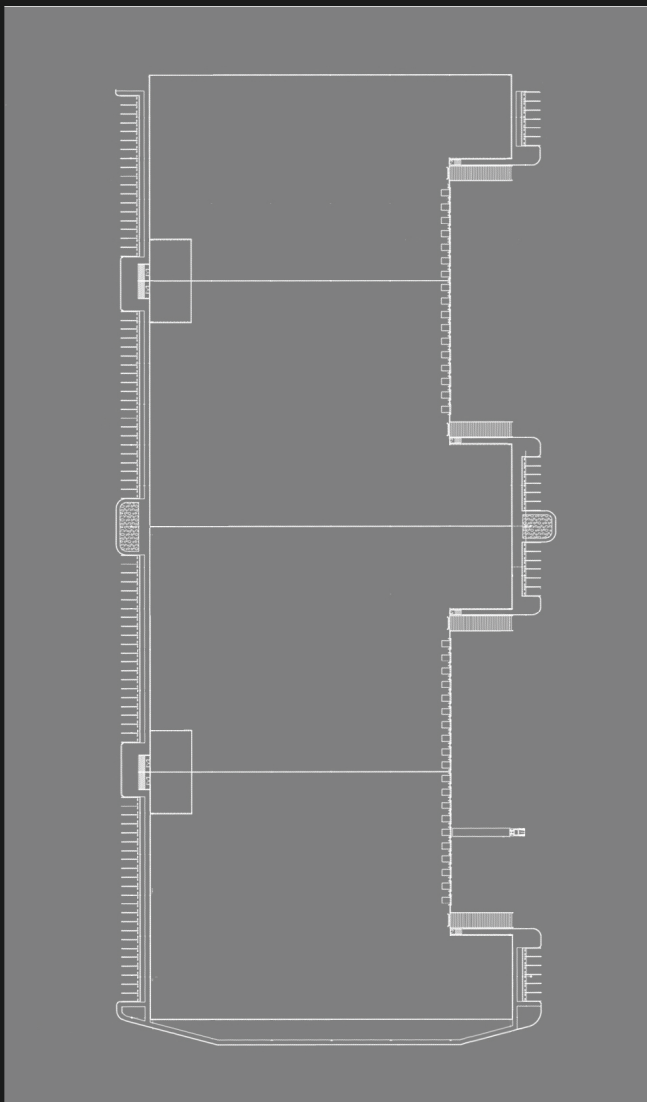
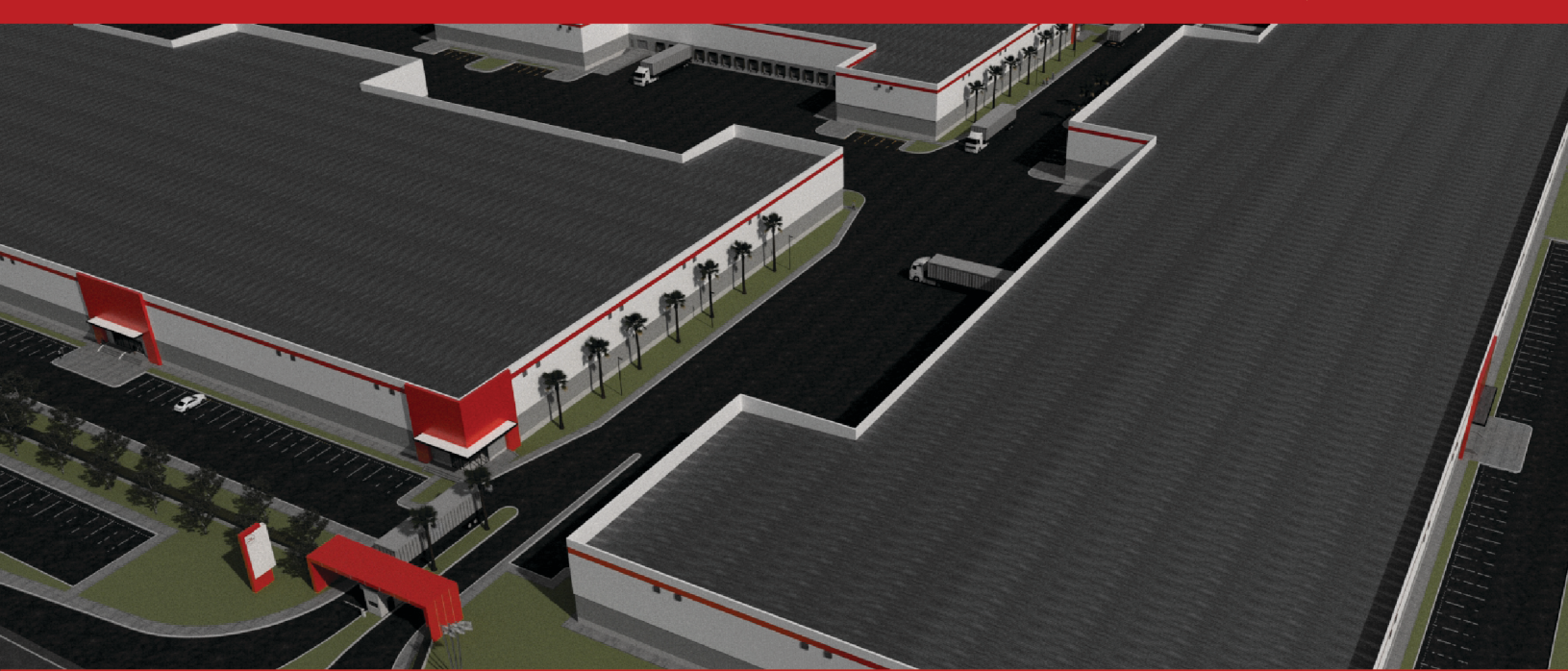
UNDERGROUND MAIN SERVICES

- Electric Power Services Available
- Natural Gas Services Available
- Water & Sewage Services Available

LOCATION

- Ejido Puebla, Mexicali, Baja California, México

**1 MILLION
SqFt**



BUILDINGS SPECIFICATIONS

- 200K to 300K Modulate Buildings
- + 50,000 SqFt per Module
- 30-32 Ft Clear Height
- 3% Speculative Open Offices Area & WC's
- 40'x57' Span Bays
- Ashford Hardener Finished Floor
- Block and Structural Insulated Laminated Walls
- R19 Insulated Roofing
- Interior Mechanical Ventilation
- 30Fc Interior Lighting
- SE Transformer per Module
- 6 Equipped Leveling Docks
- 2 Sectional Cargo Doors with Ramp
- Concrete Maneuver Area for Trucks
- High Traffic Pavement roads & Access
- Car Parking Area

TENANT IMPROVEMENTS

- As Required

4 Multi Tenant Buildings